

Educators' Guide **2021-2022**



Featuring programs correlated to the
North Carolina Standard Course of Study
and
North Carolina Foundations for Early Learning and Development



GENERAL INFORMATION



TABLE OF CONTENTS

- Phone Number/Address/Hours..... 2
- Admission/Group Program Fees 3
- Reservations..... 4
- Cancellations or Late Arrivals 4
- Dining..... 4
- Kaleideum North Gift Shop 4
- Accessibility Information 5
- Sanitation Protocols 5
- Tips for a Great Visit 5
- Learning Lab Programs..... 6-7**
- Planetarium Programs 8-9**
- Kaleideum to You..... 9**
- Off-Site Programs..... 10**
- Small Group Programs 10**
- Exhibits - Kaleideum North 11**

All educational programming will occur at Kaleideum North during the 2021-22 school year. At this time Kaleideum is asking all school groups and chaperones to remain masked while visiting the museum. Please check kaleideum.org and north.kaleideum.org for the latest guidance regarding COVID-19 protocols. Kaleideum does offer virtual field trips. For more information, visit north.kaleideum.org/educatorguides/.



400 W Hanes Mill Road
Winston-Salem, NC 27105

Welcome Desk: (336) 767-6730, ext 1000
Fax: (336) 661-1777

To book a field trip:
Christy Ferguson, Manager of Museum Scheduling
cferguson@kaleideum.org | (336) 714-7105

Kaleideum North Hours

SCHOOL YEAR

Monday Closed
Tuesday-Friday 9 am-5 pm
Saturday 10 am-5 pm
Sunday 1-5 pm

SUMMER (June 1-Labor Day)

Monday **Members Only** 10 am-1 pm
Tuesday Saturday 10 am-5 pm
Sunday 1-5 pm

The Kaleideum North Outdoor Park closes 30 minutes earlier than the museum each day.

Kaleideum will be closed on specific holidays throughout the year. Please check kaleideum.org for the most up-to-date information.

GENERAL INFORMATION

School Group Admission*

(per person)

Winston-Salem/Forsyth County	
School System Students	Free
All other Forsyth County Students	\$4
Preschool Students	\$4
Out of County School Students	\$6
Teachers	Free
Chaperones**	Free
Bus Drivers	Free

***School year chaperone ratio is 10:1; summer chaperone ratio is 10:1. Additional chaperones will be charged \$6.*

Group Program Fees

(per person)

PreK-12 th Grade Programs	\$5.50
Planetarium Programs	\$5.50
Laser Shows	\$1.50

Non-School Groups of 10 or More Admission*

(per person)

To ensure you receive this rate, please pre-register your group.

Adults	\$7
Seniors (62 and older)	\$7
Youth (1-19)	\$7
11 months and under	Free
Bus Drivers	Free

**NC sales tax included.
Program fees are not taxed.*



Discounts are available for Title 1 Schools. Contact us for more information.

PLANNING YOUR VISIT

Reservations

Please make reservations at least two weeks prior to the requested date in order to ensure a greater number of program choices.

To book a field trip to Kaleideum:

Christy Ferguson - Manager of Museum Scheduling
cferguson@kaleideum.org | (336) 714-7105
north.kaleideum.org/school-field-trip-form

You will be contacted when your
Registration Form is received.

To assist with planning, educators are invited to visit Kaleideum free of charge with their valid teacher ID.

Important! Your field trip or group visit to Kaleideum is not confirmed until you receive a confirmation letter. Please bring this confirmation letter with you to present at the Welcome Desk on the day of your visit. **If you do not receive your letter within two weeks of booking your visit, please contact:**

Christy Ferguson - Manager of Museum Scheduling
cferguson@kaleideum.org | (336) 714-7105

Cancellations or Late Arrivals

Kaleideum strives to be flexible and accommodate changes in schedule; however, we appreciate as much advance notice as possible.

- If your group must cancel or reschedule your visit to Kaleideum, please call the Welcome Desk as soon as possible and provide at least 24 hours' notice in order to avoid a possible \$50 cancellation fee.
- If your group will not be arriving by your scheduled time, please call the Welcome Desk:

Kaleideum North Welcome Desk:
(336) 767-6730, ext 1000

A late arrival could result in shortened or canceled programs with no refund. Late entry to a planetarium program in progress is prohibited.

Dining

Bring bag lunches for your field trip if you like!

- At **Kaleideum North**, FoodWorks is a spacious indoor dining area. Tables are first come, first served. With respect to other guests, please limit lunch times to 30 minutes.
- At **Kaleideum North**, an outdoor picnic area is available in front of the building and in the Outdoor Park.
- Drinks and snacks are available from vending machines.
- Kaleideum is convenient to many restaurants. When making your reservation, ask us about food delivery.

Kaleideum North Gift Shop

The Gift Shop features a wide array of fun and educational items to fit every budget and enhance your experience.

- For the convenience of all guests, we ask that chaperones accompany students inside.
- Pre-packaged gift bags, a convenient way to save time and money, are available for \$2 each and contain a sampling of our most popular items. Please request gift bags when you schedule your field trip.
- **Teachers receive a 10 percent discount on Gift Shop items.**



Accessibility Information

Kaleideum is committed to creating and sustaining a diverse, equitable, accessible, and inclusive learning ecosystem. Kaleideum can accommodate a variety of accessibility needs.

- Kaleideum has dedicated accessible parking spaces at each location.
- Kaleideum buildings include ramps and elevators to navigate between floors, in addition to stairs.
- Seating is available at intervals throughout both Kaleideum locations.
- Both museum locations have a large restrooms on each floor for your comfort and convenience.
- Special lighting is available in the Kaleideum North Planetarium for sign language interpreters. Please inform us of this need in advance when you schedule your visit.
- Supplemental braille materials are available for the Kaleideum North Planetarium on request.
- The planetarium is ramped with accessible seating.
- Some planetarium shows contain strobe lighting and visual effects that could induce seizures.
- Sensory-friendly options are available upon request when museum attendance is usually light. During this time, children with autism spectrum disorder (ASD) and sensory processing differences can have a fun, enjoyable, and interactive learning experience in a comfortable, accepting, less stimulating environment.
 - A social narrative and visual schedule (available for download at north.kaleideum.org/accessibility/) can help you and your students prepare for your visit to the museum.
 - Choice boards are available at the front desks at both museums and may make navigating the museums easier on students and caregivers alike.
 - Should the museum environment become over-stimulating, please request access to one of the quiet areas. These areas may not be available during peak attendance.
 - At the museum, learning can be verbal or non-verbal; hands-on or hands-off; fast or slow; social or solitary; loud or quiet; directed or inquiry-based.

Sanitation Protocols

Our top priority is the safety and well-being of our guests, staff, and animals. Kaleideum continues to prioritize keeping the museums clean and disinfected, and the museum maintains the highest standards of our cleaning protocol, which include disinfecting our facilities, exhibits, and exhibit props daily with an EPA-approved, hospital-grade disinfectant proven to kill COVID-19. In addition, our staff follow basic hygiene practices, such as frequent handwashing and using alcohol-based sanitizer throughout each museum.

Tips for a Great Visit!

- We recommend allowing at least two hours to explore.
- Learning Lab programs are approximately 30-45 minutes long.
- Visits begin with a short orientation by a museum staff member.
- Students must be chaperoned at all times.
- Food and drinks are allowed only in designated areas.
- Please don't feed any animals or tap on aquariums or enclosures.
- Scavenger hunts are available for free download on our website.



LEARNING LAB PROGRAMS

Learning Lab Programs are hands-on, interactive explorations for individual classes of approximately 25 students. **For older grades and large groups, please ask about our Auditorium program options*!**



Legos & Lights

Grades PreK-4

How does light affect the world around us? Dive into the visible light spectrum as we investigate shadows, learn more about how our eyes help us detect color, and create miniature scenes that are brought to life with light!

North Carolina Foundations for Early Learning and Development – APL-1; APL-4; APL-6; ESD-5; CD-1; CD-15
North Carolina Standard Course of Study – Science, Visual Arts: K.P.1; 4.P.3; K-3.V.2

Sounds All Around

Grades PreK-2

Let your class put their “good vibrations” to use! Take a musical adventure as we make some sounds of our own using traditional instruments and natural objects, all while discovering more about sound waves, the inner ear, and the ways in which we hear.

North Carolina Foundations for Early Learning and Development – APL-4; APL-5; ESD-2; ESD-5; LDC-1; CD-5
North Carolina Standard Course of Study – Music, Science: K-2 ML.1; K-2 ML.3; K-2 MR.1; 2.P.1

The Greedy Triangle

Grades K-2

What happens when a Triangle gets tired of only having three sides and angles? In this storytime program, we’ll practice counting and sequencing numbers 3-10, as well as identifying some familiar shapes and discovering new shapes together. We’ll also create geometric works of art to bring home!

North Carolina Standard Course of Study – Mathematics, English Language Arts: NC.K.CC.2; NC.K.G.1; NC.K.G.2; NC.K.G.5; NC.K.G.6; NC.1.G.1; NC.1.G.2; NC.2.G.1; RL.K.1; RL.1.1; RL.2.1; RL.K.3; RL.1.3; RL.2.3; SL.K.2; SL.1.2; SL.2.2; L.K.4; L.1.4; L.2.4

Fur, Feather, Scale & Slime*

Grades PreK-5+

Meet some of our animal ambassadors! We’ll explore the differences in animal groups by examining fur, feathers, and scales, and observe the unique characteristics of some of our favorite animals. By studying more about habitats, the food web, and the interconnectedness of animals and their environments, we’ll discover simple things we can do to improve an animal’s home.

North Carolina Foundations for Early Learning and Development – APL-1; APL-2; ESD-5; LDC-2; LDC-3; CD-14; CD-15
North Carolina Standard Course of Study – Science: K.L.1; 1.L.1; 2.L.1; 4.L.1; 5.L.2



* Denotes Auditorium option available. Groups with fewer than 10 students, please refer to our Homeschool/Small Group schedule on page 10.

LEARNING LAB PROGRAMS

Weather Wonders*

Grades K-5+

What will the weather be like today? Get weather-wise in this program as we investigate weather patterns and daily and seasonal changes. Learn how meteorologists use weather-measuring instruments, what causes pressure systems and cloud formation, and forecast your own weather predictions too!

North Carolina Standard Course of Study – Science: K.E.1; 2.E.1; 5.E.1

Melting Pot

Grades K-5

Turn solids into liquids and liquids into gases while making hand-dipped candles to observe matter's structure and properties. Discover how temperature affects the properties of matter and experiment with different substances to see and feel all the states of matter.

North Carolina Standard Course of Study – Science: K.P.2; 2.P.2; 3.P.2; 5.P.3

Potions in Motion*

Grades K-6+

Get exposed to the elements as we measure and mix to see and feel the differences between physical and chemical changes. Sharpen your observation skills and practice lab safety while we test chemical reactions to create fizzing, bubbling, and colorful concoctions.

North Carolina Standard Course of Study – Science: K.P.2; 2.P.2; 3.P.2; 5.P.2; 6.P.2

Magnificent Magnets

Grades 1-4

It's time to get forceful as we experiment with various types of magnets and magnetize everyday objects! Test the strength of electromagnets, observe the effect of magnets on a compass, and use metal filings to detect invisible magnetic fields.

North Carolina Standard Course of Study – Science: 1.P.1; 3.P.1; 4.P.1

Science Extravaganza (Auditorium only)

Grades 1-6+

Experience the wonders of chemistry, physics, and biology all in one program! Get blown away by the forces of chemical concoctions, be shocked with an amazing look at electricity, and even meet one of our resident animals. Caution: we'll start things off with a bang!

North Carolina Standard Course of Study – Science: 1.P.1; 1.L.1; 3.P.2; 3.P.3; 4.P.3; 4.L.1; 6.P.2

Cantilever Challenge

Grades 4-8+

Learn to think like an engineer and learn the basics of experimental design while exploring the role of cantilevers in architectural design. Students will conduct a scientific experiment to determine the weight required to support different lengths of cantilevers using Keva® blocks. Identification of dependent and independent variables, graphing data and determination of standard error are all part of this math and engineering focused program for middle school. Teachers will be provided with pre- and post-visit activities to use in their classrooms.

North Carolina Standard Course of Study – Science: 5.P.1, 7.P.1 Math: NC.6.EE.9; NC.7.SP.3; NC.8.F.4

Robo Surprise!* Wednesdays only

Grades 4-8+

Are you curious about robotics? Ever wanted to learn how to control a robot? Come explore the world of robotics using Ozobots, Hummingbird kits, Spheros and more! Join us for this special program offered once a week and led by actual engineers! Check our website for details and the current schedule.

***Programs change weekly and are only offered once a week on Wednesdays.**

NC Computer Science Standards – 68-CS-02; 68-CS-03; 68-DA-04; 68-AP-03; 68-AP-04



PLANETARIUM PROGRAMS

The Kaleideum North Planetarium is a multi-media theatre that seats 119. Inside the 50-foot dome, guests experience a realistic simulation of the night sky as observed from any place on Earth. Special effects, video images, and lighting are combined to enhance the overhead drama. Planetarium programs range from preschool to adult level. The laser light system offers a dazzling light show set to music and includes a choice of selections for all ages. Laser shows are not recommended for individuals who are photo-sensitive or motion sensitive. Groups with fewer than 15, please call (336) 714-7105 or email cferguson@kaleideum.org



Discovering the Earth, Moon & Sun

Grades K-1

Learn about the interactions between the Earth, Moon, and Sun within our solar system. Watch the Earth from the International Space Station, learn how

gravity keeps us on Earth, how the Sun keeps us alive, and how everything moves together in this educational program for the very young astronomers.

North Carolina Standard Course of Study – Science: 1.E.1

Astro-Moose Goes to Space

Grades K-3

An introduction to the Solar System for the young astronomer guided by a curious moose! Visit planets, witness the phases of the moon, and more in this one-of-a-kind adventure.

North Carolina Standard Course of Study – Science: 1.E.1; 2.E.1.1; 3.E.1; 3.P.1

Tour of the Seasons

Grades 2-6

Discover why we have seasons on Earth and whether other planets have seasons. See how the stars appear to change throughout the winter, spring, summer, and fall with our full-dome night sky.

North Carolina Standard Course of Study – Science: 2.E.1.3; 3.E.1; 3.P.1; 4.E.1; 5.P.1; 6.E.1; EE.1.1

Solar System Tour

Grades 1-6

Take the grand tour of our solar system! From the sun and planets to moons, dwarf planets, and more. Our Planetarium educator will take you on a trip through space.

North Carolina Standard Course of Study – Science: 1.E.1; 2.E.1.1; 3.E.1; 3.P.1; 4.E.1; 5.P.1; 6.E.1; EE.1.1.2; EE.1.1.3

Follow the Drinking Gourd

Grades 1-5+

A folk tale of an enslaved family who follows the Big Dipper north on a quest for freedom. Gaze upon the Big Dipper yourself with our full-dome night sky!

North Carolina Standard Course of Study – Science, History & Culture: 1.E.1.1; 1.H.1.2; 2.C.1.2; 5.C.1.4

Space in Motion

Grades 2-6

Learn about the basics of astronomy as we explore rotations, revolutions, moon phases, and gravity of the planets in our solar system. See the Earth's rotation in action with our full-dome night sky! This program is customized for your age group.

North Carolina Standard Course of Study – Science: 2.E.1.1; 2.E.1.3; 3.E.1; 3.P.1; 4.E.1; 5.P.1; 6.E.1

Carolina Skies

Grades 3+

This live, interactive program explores the stars and constellations visible in North Carolina's night sky throughout the year.

North Carolina Standard Course of Study – Science: 3.E.1; 3.P.1; 4.E.1; 6.E.1

KALEIDEUM TO YOU!

Space Voyagers

Grades 5+

Get an up-close look at the spacecrafts and missions that have opened humanity's window to the universe.

**North Carolina Standard Course of Study –
Science, History: 5.P.1; 6.E.1; 6.H.2.3**

All About the Cosmos

Grades 5+

Explore the solar system, black holes, dark matter, and energy as we journey through the cosmos in the Kaleideum Planetarium.

**North Carolina Standard Course of Study –
Science, History: 5.P.1; 6.E.1; 6.P.1.2; 6.H.2.3;
6.H.2.4; EEn.1.1.1**

Laser Shows

All Ages

Coming Fall 2021, a brand new laser light system from Laser Fantasy! Laser Shows can be added to your planetarium program for an additional \$1.50 per person. Laser programs are not suitable for those with photo sensitivities, epilepsy, flicker vertigo, or other motion or light sensitivities.

Kaleideum offers virtual field trips. For more information, visit north.kaleideum.org/educatorguides.



Programs at your location led by Kaleideum Educators.

Program Capacity: 25 students per program session.

Program Length: 45 minutes with 15-minute transition between sessions.

Program Price: \$100/program, maximum of six programs per day, plus round trip mileage fee:
first 25 miles = free • 26-50 miles = \$35 • 51-75 miles = \$50

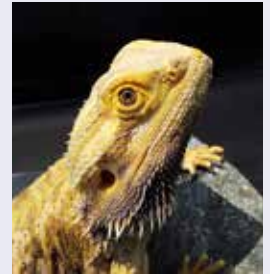
Fur, Feather, Scale & Slime

Grades PreK-5+

Meet some of Kaleideum's animal ambassadors! We'll explore the differences in animal groups by examining fur, feathers, and scales, and observe the unique characteristics of some of our favorite animals. By studying more about habitats, the food web, and the interconnectedness of animals and their environments, we'll discover simple things we can do to improve an animal's home.

**North Carolina Foundations for Early Learning and Development – APL-1;
APL-2; ESD-5; LDC-2; LDC-3; CD-14; CD-15**

**North Carolina Standard Course of Study – Science: K.L.1; 1.L.1; 2.L.1; 4.L.1;
5.L.2**



Let's ROCK Out!

Grades K-6

Transform into a geologist! Scratch the surface of rocks and minerals to learn more about the rock cycle and how rocks form and change. Through hands-on activities, discover the different properties of rocks, categorize rocks and minerals based on certain criteria, and even observe the growth of mineral crystals from a chemical solution.

**North Carolina Standard Course of Study –
Science: K.P.2; 1.E.2; 4.P.2; 4.E.2; 6.E.2**

Earth, Moon & Stars

Grades 1-6

Blast off into the solar system with this hands-on, interactive program! We'll travel to the stars and back again to learn more about what's beyond our planet and discover why the moon appears to change shape each night. Learn more about gravity, asteroids, and orbits with activities that are out of this world!

North Carolina Standard Course of Study – Science: 1.E.1; 3.E.1; 4.E.1; 6.E.1



OFF-SITE PROGRAMS

Geology at Work*

Grades K-6+

Experience geology in action at neighboring Vulcan Materials Company's working quarry! Led by Kaleideum Educators, students can view the quarry up close, and learn about the products mined here and the uses of these materials in everyday life. The Joseph A. Gutierrez Geology and Earth Science Museum at Vulcan also houses a large collection of gems and minerals, so students can dig deeper into the basic components of Earth's building blocks.



This program is fully sponsored by Vulcan Materials Company. Groups are encouraged to visit Kaleideum North free of charge on the same day as their Geology at Work program.

North Carolina Standard Course of Study – Science: K.P.2; 1.E.2; 4.P.2; 4.E.2; 6.E.2

**This program is currently virtual. Please check north.kaleideum.org for the most up-to-date information.*

SMALL GROUP PROGRAMS

Homeschool/Small Group Program Days

These programs for small groups of 10 or fewer are monthly. Programs begin at 1:30 pm, unless otherwise noted. **Pre-registration is required, and group admission rates apply.**

Date	Program	See Page	Grades	Time
Tuesday Sept 7	Fur, Feather, Scales and Slime	6	K-5	1.30 pm
Tuesday Oct 12	The Greedy Triangle	6	K-3	1.30 pm
Tuesday Nov 9	Potions in Motion	7	K-5	1.30 pm
Tuesday Dec 14	Sounds All Around	6	K-3	1.30 pm
Tuesday Jan 11	Magnificent Magnets	7	K-5	1.30 pm
Tuesday Feb 8	Follow the Drinking Gourd	8	K-3	1.30 pm
Wednesday Mar 16	Brain Awareness Day	-	4+	9 am - noon
Tuesday Apr 12	Geology at Work (at Vulcan Materials Company)	10	K-6+	1.30 pm
Tuesday May 10	Weather Wonders	7	K-5	1.30 pm

Visit north.kaleideum.org for program descriptions. Students must preregister for Homeschool/Small Group Programs. Schedule your visit with Christy Ferguson, cferguson@kaleideum.org or (336) 714-7105.

Dates and programs may change.

EXHIBITS | KALEIDEUM NORTH

All educational programming will occur at Kaleideum North during the 2021-22 school year. Students can also enjoy these exhibits at Kaleideum North during their visit:



BioWorks

The BioWorks exhibit takes you from the tropical rainforests of South America to the fields of North America. Learn about conservation efforts on a local and global scale. This exhibit hall showcases a variety of live animals, including mammals, birds, reptiles, amphibians, fish, and invertebrates.

Environmental Park

Take a leisurely walk through the winding trails of the Environmental Park, a 15-acre outdoor natural science exhibit. There are gardens featuring native plant life and a display of common herbs. The Park offers a great contrast between North Carolina's native species and habitats.

HealthWorks

Guests can measure blood pressure, heart rate, visual acuity, and strength. Exhibits about human cells, DNA, and skeletal and muscular systems foster a greater understanding of the human body. A giant walk-in mouth and other components promote good dental hygiene. An exhibit about nutrition and food selection encourages healthy choices.

KEVAWorks

KEVA® planks are small, uniform blocks that allow guests to use "no glue, just gravity" to construct towers, bridges, animals, buildings, sculptures, or almost anything else they can envision. A variety of finished structures are on display in the exhibit to inspire young and old alike as they work together or independently to build their creations.

KidsWorks

Science activities for our youngest museum guests include puzzles, puppets, blocks, and books. The country barn and grocery store encourage imaginative play.

North Carolina: Mountains to the Sea

This gallery reflects the geological and biological diversity of North Carolina, from the mountains to the piedmont and coastal plain. Walk inside a 20-foot tree to see the concentric rings; climb up through the inside and slide back down to the bottom! Younger children can practice fishing in the simulated stream, while all guests can see a variety of live fish in the aquariums. Guests can examine rock and mineral collections and search for North Carolina plants and animals artistically rendered in the giant mural.

Outdoor Science Park

This area explores simple machines, sound, and energy on a large scale. Giant bat ears enable students to listen like a bat and understand echolocation and sound waves. There is also a fossil dig for younger guests, a rain garden, and a port demonstrating alternative energy.

PhysicsWorks

This interactive exhibit hall demonstrates principles of motion, forces, and simple machines. Learn about light, color, and optics in the Captured Shadow room, and see and feel how a gyroscope works and affects movement and balance.

Science Lab

Adjacent to our "North Carolina: Mountains to the Sea" exhibit is the Science Lab featuring mounted displays of animals from around the world, fossil samples, skulls, shell collections, and many more natural science artifacts.

SoundWorks

You'll hear it before you see it! Make your own music while learning about sound waves, vibrations, and the science of sound as you experience thunder drums, a walk-on piano, the invisible harp, and more.



400 W Hanes Mill Road
Winston-Salem, NC 27105



Non Profit Org.
U.S. Postage
PAID
Permit No. 193
Winston-Salem, NC

kaleideum.org

Kaleideum Downtown

390 S Liberty Street
Winston-Salem, NC 27101

Welcome Desk: (336) 723-9111, ext 211

SCHOOL YEAR

Monday-Friday CLOSED
Saturday 10 am-5 pm
Sunday 1-5 pm

SUMMER (June 1-Labor Day)

Monday **Members Only** 10 am-1 pm
Tuesday Saturday 10 am-5 pm
Sunday 1-5 pm

Kaleideum North

400 W Hanes Mill Road
Winston-Salem, NC 27105

Welcome Desk: (336) 767-6730, ext 1000

SCHOOL YEAR

Monday Closed
Tuesday-Friday 9 am-5 pm
Saturday 10 am-5 pm
Sunday 1-5 pm

SUMMER (June 1-Labor Day)

Monday **Members Only** 10 am-1 pm
Tuesday Saturday 10 am-5 pm
Sunday 1-5 pm

The Kaleideum North Outdoor Park closes
30 minutes earlier than the museum each day.